



# Getting Acquainted with Trinity Episcopal Church

Kirksville, Missouri

2017

## Your Guide to Getting Acquainted with Trinity

**Table of Contents****Part One – Who We Are**

Trinity People Intentionally Care for One Another	3
What to Expect at Trinity	3
FAQs	3
Other Services and Opportunities	6
Tuesday Noonday Prayer	6
Wednesday Morning Prayer	6
Taize Services	6
Worship Team	6
Altar Guild	6
Music and Choir	7
Adult Formation	7
Clergy, Staff, and Governance	7
Rev. Carrol Davenport, Transition Pastor	7
Rev. Dr. Maria Evans, Deacon	8
Dr. Scott Alberts, Music Director	8
Bishop's Committee	9
Delegates to Diocesan Convention	13
News	14
Documents	14
Money Matters: Budget, Stewardship, Fundraising	14
Accessibility Building Project	14
History	17
Episcopal Church Links	19

**Part Two: What We Do**

Diocesan Involvement	20
Campus Ministry	20
Oasis	21
Outreach and Food Ministries	22
Collaboration and Cooperation	23

**Part Three: Vicar Search Resources**

Community Profile	23
Highlights of 2016	27
Mission, Vision, Goals	28
Financial Impact of Accessibility Project, Parish ASA and Financials	29



### Trinity People Intentionally Care for One Another

Trinity has a strong history as a community whose members care for each other. We love to worship together; we enjoy lively conversation and meaningful fellowship during coffee hours; we bond with each other in outreach and formation activities. In the past few years, we've learned more about single elderly persons. We help those who need transportation. We try to stay in touch with those who are unable to attend services through home visits, phone calls, and sending cards and notes. We've stayed with our college students as they complete their studies and move on; we join with them in prayer, on social media, and sometimes in person, as they experience new jobs, new relationships, weddings, births, and other life events. Our hope is that no one associated with Trinity will lack for a hand to hold or a sympathetic ear to listen – and that each person's basic needs for food, healthcare, love, and shelter will be met.

### What to Expect at Trinity

*Trinity is a community of people who love God, where you will find welcoming smiles and listening hearts and nourishment for the spiritual hunger we all bring with us.*

Of course, you may have questions. We asked a few ourselves when we were first looking for a church home. Here are the FAQs (frequently asked questions):

- ***Are we accessible?***
  - Yes, we are. We have designated diagonal parking on Harrison which gently slopes up to our Harrison Street door. A lift inside takes visitors to all levels of the building. Three accessible bathrooms are available on the sanctuary and undercroft levels.
- ***When are services held?***
  - Our two main services during the week are Sunday at 10 a.m., the service with Communion—a little over an hour) and Wednesday at 7:30 a.m., the Morning Prayer service, no Communion, around 25 minutes.)

- ***May I take Communion?***
  - All baptized persons are welcome to receive Communion. We use real wine. When you receive the bread, you can eat it immediately and drink from the chalice, or you can dip the bread in the chalice and then eat it. We have used homemade bread and currently use wafers. If you need gluten-free wafers, please come forward first. If you do not wish to consume wine or drink from a common cup (one shared with everyone), you may receive only the bread. If you do not wish to participate in Communion, you may remain seated or you may go forward for a blessing. The universal sign for wishing a blessing is to fold your arms across your chest in an “X.” The priest will then touch your head and pray a blessing.
- ***What is the music like?***
  - We use the Episcopal Hymnal, usually chant the Psalm designated for the day, and sing hymns and service music. We all love to make a joyful noise. The choir performs a range of music from traditional to contemporary, from American and African American to world music. Instrumental music includes organ, piano, and occasionally brass or wind instruments.
- ***Will I be singled out as a visitor?***
  - No. Some may greet you at the beginning or end of the service with a handshake and hello. The priest welcomes all visitors during the announcement period and she or he invites visitors to sign our guest book. We pass the peace during the service and also greet you then. We respect your choice to involve yourself with us in your own way and at your own pace.
- ***What should I wear?***
  - Wear what is comfortable for you. You will see people dressed up in suits and dresses; you will also see people in jeans, khakis, cowboy boots, and tennis shoes.
- ***Will there be people like me?***
  - If you believe that we are all God’s children – there will definitely be someone like you! You will see people from Truman, from ATSU, from all around town – a wide variety of ages, stages in relationships, and amount of time lived in Kirksville. We are an Oasis congregation in the Diocese of Missouri, which means we are committed to being a welcoming, affirming parish to the gay/lesbian/bisexual/transgender community – and we have a fair number of members who are part of that community. Both men and women serve our church in lay and ordained leadership positions.
- ***What is the Sunday service like?***
  - Our form of worship is liturgical. We follow seasons in the church year (e.g., Lent, Advent, and so on) and the order and many parts of the service stay the same. We use the common lectionary (as many different churches do), which specifies different Old Testament and New Testament readings for each day of the year over a three-year cycle.
- ***How do I know when to sit, stand, or kneel?***
  - The red Book of Common Prayer and the bulletin for the service will give you clues like “The people stand or kneel.” Please feel free to sit if kneeling or standing is uncomfortable for you. We usually stand to sing, to hear the reading of the Gospel, to recite the Nicene or the Apostles’ Creed, and to join in the Prayers of the People. We kneel or sit for the Confession. During the Eucharistic Prayer, we stand at the beginning, and after the Sanctus (the part where we sing, “Holy, Holy, Holy, Lord”) some people choose to kneel and others remain standing.
- ***All the books and bulletin are sort of confusing. How do I follow along?***
  - Most people find themselves juggling three things—the Bulletin, the red Book of Common Prayer (BCP), and the blue Hymnal. Use the Bulletin as your first source. A BCP page number directs you to a passage in the red Book of Common Prayer. Hymn numbers on

the hymn board at the front of the church refer to the blue Hymnal. “Insert” on the hymn board means there is a hymn that appears on a loose sheet in the hymnal or in the bulletin. If you see “L” before a hymn number, the hymn is in *Lift Every Voice and Sing*, a shiny multi-colored book in the pew book rail. Yes, it’s complicated – and we get lost sometimes too, so we are happy to help you.

- ***Will you ask me for money?***
  - We do pass the plate on Sundays during the offertory, but nobody is under any obligation to put something in. Many members make pledges annually to the church and we create a budget for the church around that anticipated revenue.
- ***What happens after the service?***
  - Each week, a volunteer prepares coffee and goodies for us after the service so that we have a time to share news and spend a little time with each other. Often, gluten-free alternatives are available. Please use the lift or the stairs and come down to join us!
- ***I’m not an Episcopalian. I’m not even sure what an Episcopalian is. What do you believe?***
  - We strive to live by the message of Christ, in which there are no outcasts and all are welcome. We are a sacramental church that promotes thoughtful debate about what God is calling us to do and be as followers of Christ. We say our faith is like a “three-legged stool” in which the legs are Scripture, tradition, and reason. The core of who we are as part of the body of Christ is outlined in our red Book of Common Prayer. You can open it (online or in the pew) to “An Outline of the Faith” (or the Catechism) and read about our beliefs. You can find more at: <http://www.episcopalchurch.org/visitors.htm>.
- ***Am I welcome if I don’t believe?***
  - We are inclusive community of faith. We welcome non-believers, people from other faith traditions, and “seekers” of all sorts. Some people are part of our community mostly because they wanted to sing in a choir or play a musical instrument. Some attend simply to accompany a friend or significant other. Some don’t attend services but do join us for outreach activities in the community or discussion groups. Our undercroft can be used by many community groups. If you can welcome us as a Christ-centered community of believers, we can welcome you, no matter if you are from a different faith tradition or consider yourself a non-believer.
- ***How do I put a name on the prayer list?***
  - Simply speak to the priest about including someone.
- ***What about children?***



We enthusiastically welcome children of all ages! Free childcare is available for infants and small children in the nursery during most services. Families who prefer to have children with them in the service are welcome to do so. Activity bags appropriate for children too young to actively participate in a

service are located at the Church entrance. Our older children participate in collaborative Sunday School with children at First Presbyterian Church; we have also done a shared Vacation Bible School with the Presbyterians and the members of First Christian Church (Disciples of Christ). Middle and High School youths are also welcome to join the Presbyterian's fellowship programs. In the recent past, we have enjoyed using the Godly Play curriculum with our children. We look forward to the day when we have sufficient children of appropriate ages, and can reinstate Sunday School/Children's Formation at Trinity.

### Other Services and Opportunities

***Tuesday Noonday Prayer*** - Twin Pines Adult Care Center at 1:30 p.m., open to all. We usually discuss the readings for the upcoming Sunday with some in-depth examination of the gospel for that day. The service and discussion usually last about an hour; lay leaders take turns presiding.

***Wednesday Morning Prayer*** - Trinity at 7:30 a.m. , open to all. A brief 25-minute service to offer thanks, hear the readings and prayers for the day, and to greet other participants. Lay leaders preside.

***Taize Service*** – Trinity, 7 p.m. on two or three designated Sundays per year, open to all.



Taize-style service focuses on social issues appropriate to the time and season. This is a quiet service of song, scripture, and silent periods of meditation designed to lead participants to contemplate and celebrate their relationship with God and with one another. Modeled after the weekly services at the [Taizé monastic community in France](#), this service includes the opportunity to light candles to represent prayers and intercessions. The music is simple to learn and sing. A lay committee designs and leads this service.

***Worship Team for Sunday Services*** - Lay leaders during worship service include hospitality greeters, acolytes, chalice bearers, intercessors, and lectors. Greeters welcome people and offer them bulletins for the service. Acolytes vest for worship, carry the processional cross, and assist the priest at the altar. Chalice bearers serve the consecrated wine and are licensed by the Bishop. Intercessors lead prayers for the church and the world. Lectors read the designated portions of the Old and New Testament and lead the congregation in the reading/chanting of the Psalm.

***Altar Guild*** - Altar Guild members make the sanctuary visually appropriate and physically neat and tidy. Each Sunday one Altar Guild member is responsible for filling the cruets with wine and water; getting the communion wafers in the appropriate container and place; putting the season-appropriate paraments on the altar, pulpit and lectern; making sure the correct candles are ready to light; ensuring that the hymnals and the Book of Common Prayer are available in each pew; putting the correct hymns on the hymn board;

placing flowers in the designated places behind the altar; and tending to many other small details that together ensure that the Sunday service runs smoothly.

**Music and Choir** - The purpose of music ministry at Trinity is to deepen spiritual relationships through the experience of music. Our music helps those who listen and those who sing or play an instrument to open their hearts to God. Music also provides all of us with a deeper awareness of our strength as God's people in community as we offer praise and worship together. We enjoy quality music in a variety of styles, including Episcopal and Lutheran music from Reformation to early 20<sup>th</sup> century; historic music from the American South; African-American music; contemporary music; the best of post-Vatican II Catholic music; world music from the South American and African Christian traditions; and modern arrangements of traditional church music. The choir sings special musical offerings at approximately 24 services throughout the year, and joins in congregational singing the rest of the year. Special occasions feature stringed, wind, and/or brass instruments.

**Adult Formation** - In the last several months, we have completed two Church/Next TV courses – the first with Presiding Bishop Michael Curry and the second with Robert Lupton, author of *Toxic Charity: How Churches and Charities Hurt Those They Help (and how to reverse it)*. We also completed a series of lessons on liturgical music with Scott Alberts, our choir director. We discussed John Dominic Crossan's book *How to Read the Bible and Still be a Christian*. In the recent past we've explored some of the ideas of Richard Rohr, Henri Nouwen, and a series of lessons on civil discourse. Our group often includes members from other churches; we have intentionally done summer adult formation cooperatively with the Presbyterians. Any adult may suggest an adult formation topic and we often take turns leading discussion of particular book chapters or video segments.

### Clergy, Staff and Governance



[The Rev. Carol Davenport](#), Transition Pastor

Carol grew up in Norfolk, Virginia and as an active participant in a large Southern Baptist Church that sat on the edge of an affluent white neighborhood on one side and a small African American neighborhood on the other. As public schools were forced to integrate she watched those issues play out in the institutional church. Those early church experiences as well as her parents' acceptance of all people helped to shape her own commitment to the inclusion of all people in the life of the Church

In 1993 she was ordained to ministry in the Southern Baptist Church of her childhood. Opportunities for ministry as a woman were not abundant in Baptist churches, and as the theology of the Southern Baptists

moved to the right she found herself moving to the left and eventually pursued ordination in The Episcopal Church. She was ordained to the priesthood in 2006.

Her full-time work since 2006 has been as chaplain and bereavement coordinator for Hospice of Northeast Missouri, serving people in 11 rural counties. Carrol enjoys spending time with family as well as reading and writing and taking photographs.



The Rev. Doctor Maria L. Evans, Deacon

Maria is a near-lifelong Missouri native, born in Macon, MO. She grew up in another religious tradition, but left it in her mid-20's because of its non-inclusiveness. She spent Sundays for the next 20 or so years of her life at the "green cathedrals" of golf courses; as a result, her personal theology is highly creation-based and rooted in finding sacramental meaning in unlikely places.

Maria is a board-certified anatomic and clinical pathologist and works part-time as an owner of Boyce & Bynum/Chariton labs (Kirksville). Through her office practice she discovered the Episcopal Church, and came to Trinity at the urging of her practice partner's wife and her bookkeeper, who were both members.

At Trinity, old memories began to pop up—the gnawing that “doctor” would not be her final calling. Over several years, she began to discern those feelings with the help of others, leading to postulancy and ordination to the Transitional Diaconate. As she awaits possible ordination to the priesthood, she serves Trinity. Maria's ministry interests are in feeding ministries, especially “faith, food, and farm” ministries, serving congregations in transition, and exploring fresh expressions of church in the 21st century.



Dr. Scott Alberts, Music Director (placeholder photo)

Dr. Alberts earned graduate degrees in Industrial Engineering and Management Sciences from Northwestern University (IL), and undergraduate degrees in Music Education and Mathematics from Oberlin College (OH). When not working, he likes games and puzzles, intellectual banter, good music, and bad television. (placeholder text)

***Bishop's Committee*** - Members of the Bishop's Committee—all laypeople—serve as church leaders. They usually meet on the second Sunday of the month after coffee hour. Meetings start around 12:00 noon and are open to anyone.

***Senior (Bishop's) Warden – Diane Johnson (Term expires Jan. 2019)***



Raised as a Roman Catholic in rural Nebraska, Diane was schooled by the Jesuits during the 1960's in San Francisco. She spent much of the 1970's and 1980's in development work in public libraries. In 1991, she moved to Columbia, Missouri to direct the continuing education office of the library school at Mizzou and to begin work on a Ph.D. in communication. Her dissertation involved three years of study in two large Christian Churches (Disciples of Christ) examining how health ministries were understood and enacted. She came to Truman State University in 2001 and recently retired. She has served on the board of Victim Support Services and currently serves as president of Kirksville Area Master Gardeners. She has been active at Trinity in work with older adults, food ministries, Taize services, fundraising, and coordination of coffee hour.

***Junior Warden – Ian Lindevald (Term expires Jan. 2020)***



Ian came to Trinity after the choir sang Christmas carols at his home across the street from the church. He has a long history of choir singing and was excited to join the best church choir in Kirksville. He was brought up in the Lutheran church on the east coast, attended a Lutheran elementary school and a Lutheran affiliated college. He studied physics and music as an undergraduate student and has a Ph.D. in physics with a specialty in musical acoustics. He plays electric bass guitar in Deadwood, a local blues band. Ian is married to Cindy Cooper and has an adult son, Daniel Diaz.

***Junior Warden - Natalie Alexander (Term expires Jan. 2018)***



Natalie Alexander has been a member of Trinity Church since the early '90's; she has been an active member of the Bishop's Committee and Search Committees several times. She values our intensity of worship, and has been active in Choir, Children's and Adults' Formation, and various outreach activities—especially social justice issues and food ministries.

***Howard Hickman (Term expires Jan. 2018)***



Howard joined the Bishop's Committee in 2015 and served as Bishop's Warden for two years. Howard is a local attorney, and has practiced in Kirksville for over 35 years. His wife Lisa is a retired teacher and art enthusiast. They have two sons, Andy and Cameron. Howard has an irreverent sense of humor, and is always willing to take his best shot at doing whatever he is called to do on behalf of Trinity. Howard and Lisa feel humbled to be a part of the Trinity family.

*Dana Elam (Term expires Jan. 2019)*

Dana has been a member of Trinity Episcopal Church since November 2015 and Bishop's Committee since January 2017. She grew up on a farm in southeast Iowa and attended Truman State University and Mizzou. She lives in Kirksville with her husband, Bill, their dog, Kiba, and their cat, Teddy. She is a service coordinator for individuals with developmental disabilities and has a passion for social and economic justice. She also loves music, reading, yoga, being outdoors, and watching plants, animals, and people grow. She enjoys singing in the Trinity choir, helping with Altar Guild, and being part of an inclusive faith community.

*Laura Gruber Harden (Term expires Jan. 2020)*

Laura Gruber Harden is a life-long Episcopalian whose father was a priest in Alabama and whose mother was the choir director at St. Timothy's in Athens, Alabama for 40 years. Laura started singing in the choir as soon as her mother would let her. She moved to Kirksville in 1987 when her husband accepted a position at Truman State University and started attending Trinity Church shortly after. This is her second term on the Bishop's Committee.

***Peer Minister – Melissa Janney***

This year, Melissa is a senior student at Truman State University majoring in sociology and pursuing her Master of Arts in special education. She was born and raised Episcopalian; her home diocese is the Episcopal Diocese of West Missouri, and she is grateful to be serving as the Peer Minister here at Trinity. She is passionate about social justice and loves that the Episcopal Church reflects that passion.

***Clerk-Treasurer – Krista Baker***

Clerk-Treasurer Krista Baker has a love for and long history with the Episcopal Church. She has served in a variety of roles including Altar Guild member, acolyte, Bishop's Committee member, Senior Warden, member of calling committees for two different parishes, and capital campaign and building committee member in her previous parish. She enjoys the various outreach projects she has been a part of the most. Krista's attention to detail and organization complement her current role as clerk-treasurer.

Krista and her husband, Tim, both enjoy being a part of the Trinity parish. For them, the acceptance and love of God is reflected in the worship at Trinity. They both enjoy the activities, the diverse membership, variety of worship opportunities and opportunities to engage with others that Trinity provides. They hope to see Trinity grow into a more welcoming place of worship for anyone in the Kirksville community.

When they are not in Kirksville attending to their jobs, they are traveling and/or visiting family and friends scattered across Colorado, Alabama and Florida. If you want some fun stories, ask Krista about her grandson, her dogs, her husband, and memorable Trinity moments. Her most recent interests include quilting and knitting.

### ***Delegates to Diocesan Convention***

***Krista Baker – Delegate (Term expires Jan. 2018)***

See above under “Clerk-Treasurer.”

***Julie Seidler – Delegate (Term expires Jan. 2019)***



Julie, baptized in the Roman Catholic Church and raised as a Presbyterian, joined Trinity in 2007 after moving to Kirksville to teach mass communication classes at Truman State University. Now, even though she no longer teaches at the university, she has stayed in Kirksville because of her close ties to the Trinity family. Julie has served on the Bishop’s committee, as the official volunteer photographer, junior warden, a member of the Altar Guild, an alternate delegate to the diocesan convention, and now as a delegate, and as a member of the choir. She is a software tester for Onshore Outsourcing and a part-time garden associate at the Home Depot. In her spare time she likes to take photos (many of her two dogs) and fall into the black hole of Facebook.

***Ian Lindevald – 1st Alternate (Term expires Jan. 2018)***

See above under “Bishop’s Committee.”

***Pete Kelly – 2nd Alternate (Term expires Jan. 2018)***



Pete has been an engaged member of Trinity for the last ten years. He served on the Bishop's Committee in the past as the Junior Warden. He enjoys serving as Acolyte, Lector, and providing good things to eat and drink during coffee hour after church. Cooking and feeding family and friends is a favorite pastime and creative outlet. During the week, Pete serves as Chair of the Education Department at Truman, and as the Interim Associate Dean of the School of Health Sciences and Education. When time permits, he loves to kayak, to read, and to putter in the garden.

### News – Link to Trinity's Weekly Newsletter – What's Happening at Trinity

Each week, Trinity publishes an online newsletter, What's Happening at Trinity (or the WHAT). To see the current issue, go to: [http://trinitykirksville.org/wordpress/?page\\_id=737](http://trinitykirksville.org/wordpress/?page_id=737) .

### Documents (Minutes)

Approved minutes are publicly posted after they are approved at a regular Bishop's Committee meeting (usually one month after they are transcribed). If you wish to review unapproved minutes, please contact the Bishop's Warden. Bishop's Committee meetings are usually held after coffee hour on the second Sunday of the month. Watch the church newsletter and online calendar for dates.

### Money Matters: Budget, Stewardship, Fundraising

#### *Information on the Trinity Budget*

- [2017 Final Budget](#)
- [Financial Position at End of 2016](#)

**Stewardship** - We understand our practice of stewardship from both the annual stewardship campaign and related parish budget, and the building fund campaign. We know that all we are and have is a gift from God and we try to allocate our time, talents, and resources to God's work in the world. We approach this from a standpoint of abundance rather than scarcity. Our annual campaign messages rely on these understandings. Each October, we encourage each other to learn how to make room in our secular lives to tend to the work of our church. Many people set examples – several tithe; many labor regularly in upkeep of the church, coffee hour and other meal preparation, yard work and outreach efforts; a few give of their unique talents in electrical/construction work, needlecrafts, musicianship, and other special areas. All are valued. Because of this quiet, steady effort, people feel comfortable giving what they can.

**Fundraising** - Trinity volunteers have used many methods to fundraise over the past four years to support the accessibility project. Over \$15,000 has been raised through projects such as Christmas card appeals to former members, a choir concert, sales of notecards featuring rural churches in Adair County, annual Shrove Tuesday suppers, a St. Patrick's Day dinner, annual yard sales, social media events (Wade in the Waters video), Amazon Smile, and a host of other small but important efforts. Other fundraising efforts are primarily oriented toward outreach efforts.

### Accessibility Building Project

In 2016 we completed an architect-designed addition to our historic building which has—for the first time since its 1917 consecration—made our church accessible. With great joy we have welcomed back people

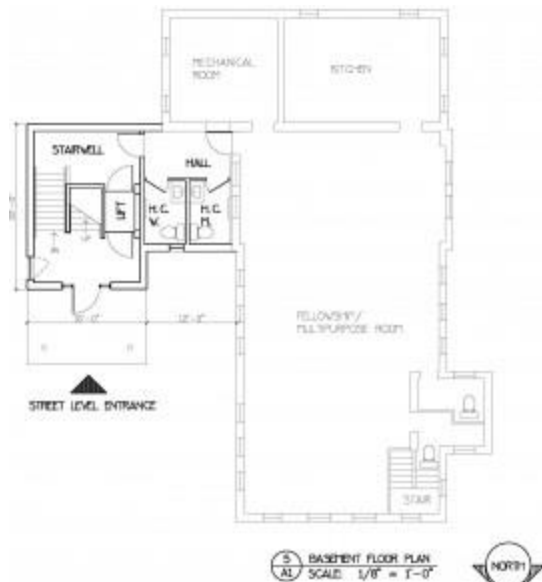
who were not able to enter when the sanctuary was not ADA compliant. At the same time, we continue to explore ways to engage in deeper discussions about what it means to be truly accessible to all.

On the following pages, you will see our goals for this project, the possibility for future expansion allowed by the design, and a brief history of the church since its founding in 1870. To see a Powerpoint collection of slides of the new addition, click here : **Building Project Slides**. If you don't have Powerpoint, you can find a PDF version here: <http://trinity.org/wordpress/wp-content/uploads/2012/05/Buidling-Project-Slides-Short.pdf>.



#### **Former Vicar, Johnnette Shane, with a Major Check Launching Accessibility Fundraising**

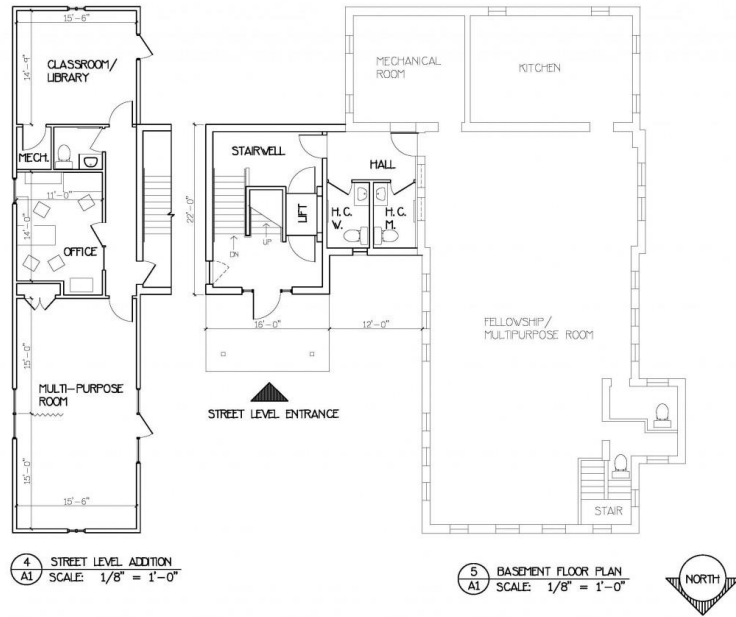
**Description and Goals** - Chinn Rother and Associates (Columbia, MO), specialists in the renovation of historic sites, created our initial plans. Trinity's building committee and the Bishop's Committee then drew up an essential description of the project in 2012. We expanded the building to the east on both the main and basement levels. On the main level, we added a new entrance facing north, including a lift between the sanctuary and the undercroft. A mechanical room and accessible bathroom were also added near the sanctuary. On the lower level two accessible bathrooms are on the left of the lift exit. The former bathroom in the basement has been converted to a small office. We used additional funds to provide new flooring, countertops and furnishing in the kitchen and undercroft areas. The primary objective of the new construction was accessibility. People who could not safely manage the old steps couldn't visit the church; people who could enter the sanctuary often didn't go to the undercroft (location of the only restroom then) because of the stairs.



**Construction**



The members of Trinity knew for some time that the church needed to be made accessible. While smaller-scale, lower-technology renovations could have been undertaken that would have addressed the basic issue of accessing the building and reaching the undercroft (such as ramps), these strategies did not tackle the issue of accessibility to lavatories, nor the added space needs that would be the logical outgrowth of a church more open to a broader population of visitors. An initial survey of the congregation indicated funds were sufficient to engage in this initial phase of construction. A second phase of this plan anticipates office space in the church, providing a more appropriate venue for the Vicar to meet with parishioners and members of the community in need. Additional rooms would allow spaces for us to develop educational, musical, and outreach functions.



## History

The history below contains excerpts from Trinity's Wikipedia entry, authored by parish membership. [Click here for an extended history of Trinity.](#)

**Trinity Episcopal Church** is a historic [Episcopal](#) church building at 124 North Mulanix Street in [Kirkville, Missouri, United States](#). Displaying an eclectic style, it was placed on the National Register of Historic Places in January 2008.<sup>[1]</sup> The church building is the second-oldest in Kirkville to be in continuous use by a congregation.<sup>[2]</sup>



**The Original Trinity Building**

The Trinity Episcopal Church congregation has been a mainstay in the Kirkville area since 1870, when first established as an outreach mission.<sup>[3]</sup> The first church building, a wooden structure, was constructed in 1870 on the site of the current church and served the congregation until 1916. A fire in 1907 caused major damage and despite repairs it was apparent the original building would not remain usable.<sup>[3]</sup> In

October, 1915 the congregation petitioned the Episcopal Diocese for assistance and were successful in reaching an agreement on financing.

Well-known local architect, and congregation member, Irwin Dunbar was selected to design the new building and during 1916 the former wooden structure was razed to clear path for the new church.<sup>[3]</sup> Construction was begun in the spring of 1917 with the local firm of Eggert & Russel chosen for the task. The cornerstone was laid on May 14, 1917 and building progressed rapidly with the consecration of the new church on November 7, 1917. Total completion cost for the project was \$11,555, the Diocese contributing \$5,500.<sup>[3][4]</sup>

The building was constructed in a [bungalow/craftsman](#), [Gothic Revival style](#) with the finished dimensions approximately 37 feet by 67 feet.<sup>[2]</sup> With the 1907 fire still fresh in their minds, the congregation chose the slightly higher cost of a brick structure as opposed to wood. The building is somewhat asymmetrical in nature and sits atop a raised basement.<sup>[1]</sup> When designing the interior, Irwin Dunbar chose some features that reflected not only a blend of Craftsman and Gothic Revival styles, but his own background as an engineer. Most notable are the open beam ceiling in the nave, constructed of [black walnut](#).<sup>[2]</sup> These trusses provided support for the heavy English tile roof, yet kept the worship area free of cumbersome columns. Black walnut was used extensively throughout the interior for trim, window frames, and other ancillary features.<sup>[3]</sup>

The sanctuary portion of the building today is much as originally designed and constructed. One significant alteration, the replacement of a section of flat roof with an inclined one took place in 1998.<sup>[3]</sup> Save for minor upgrades in electrical, plumbing, and HVAC, the interior was largely untouched.



**New Accessible Addition**

An addition was made to the building in 2015 to provide greater accessibility, accessible restrooms, and easier movement between the sanctuary and undercroft. The design by architectural firm Chinn Rother and Associates of Columbia, Missouri, provides a sense of continuity between new and old sections of the building while clearly delineating those sections that were part of the original historical structure from those which were new. The design beautifully weds new and old while opening the facility to many who could not otherwise access the historic building. New accessible parking was also added on Harrison Street. We completed this project in 2016. For more information about the project, and pictures of construction, [click here](#).

## World, National, Diocesan and Local Church Links: The Episcopal Church of the USA

[The Diocese of Missouri](#)

[Anglicans Online](#)

[Episcopal News Service](#)

[Episcopal Life Online](#)

[The Worldwide Anglican Communion](#)

[Episcopal Relief and Development \(ERD\)](#)

[Episcopal Church Foundation](#)

[Project Canterbury](#)

[Anglican Texts Online](#)

[The Society of the Archbishop Justus](#)

[Episcopal Dictionary](#)

[National Council of Churches](#)

[World Council of Churches](#)

[The Oasis Missouri](#)

### Liturgical

[The Bible](#)

[The Book of Common Prayer](#)

[Oremus](#)

[The Daily Office: Morning and Evening Prayer](#)

[Anglican Cycle of Prayer](#)

[Lectionary Page](#)

## Part Two: What We Do

### Diocesan Involvement

We are active in West Convocation, send delegates to Diocesan Council, and fully pay our annual Diocesan Assessment. We have been involved in the Dismantling Racism Commission and Oasis movement, both in training and board membership. We currently have members on the Diocesan Council, the Board of Trustees for the Diocesan Investment Trust, and the Companion Diocese Committee. All of these activities often involve travel to other parts of the state, especially St. Louis. We recently invited Rev. Canon Anderson Madimilo, a missionary from Tanzania who is studying at Eden Seminary, to visit our community, participate in worship, and speak to our congregation at coffee hour. Three of our parishioners have served as missionaries to Lui, South Sudan, our Companion Diocese.



In early 2012 we welcomed Bishop Dokolo and his wife Lillian who discussed the needs of Anglicans in Lui. Their Diocese was created in 1999, having originated as a Church Missionary Society station in 1920. It is mainly a rural area of approximately 5000 square miles. Trinity continues to explore ways in which it can further the development needs of this community. For more information about Lui Diocese, [click here](#).

### Campus Ministry

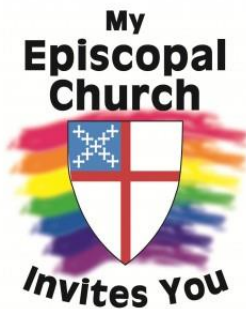
We would like a renewed and enhanced campus young adult ministry with an active college campus presence. The young adults with whom we have had the privilege of friendship are engaged in tough questions and have been eager to explore various approaches to theological issues and contemporary problems together. We believe our job is to facilitate exploration, to support young adults as they grow in faith and works, and to offer them opportunities to do things that speak to their deepest hearts' desires. Most of these young adults will not live in Kirksville for more than a few years, but we believe that our commitment to them and our relationships with them have the potential to be lifelong.

ECM members have described their work in this way:

“Episcopal Campus Ministry is a small but close-knit group of college students and young adults who are part of the Trinity and Kirksville communities. We interact with these communities based on our values, which include inclusivity, authenticity, and outreach. We meet bi-weekly to share meals and meaningful discussion, and we aim to be actively involved with our church and campus communities to share our faith and experiences with our peers. We have access to support and spiritual guidance from one another, as well as from members of the wider Trinity congregation.

This semester, we have worked on multiple outreach projects. As our goal has been to have more interaction with the campus of Truman State University, we have hosted publicity tables on campus, handing out goodies for students and faculty. We have also worked toward another of our goals of community outreach by holding small-scale fundraisers to benefit local services such as Victim Support Services. As a group, we plan to continue pursuing these goals and reaching out to our communities in the following semesters, including planning more events and collaborating with other campus organizations. We strive to be open to and inclusive of any young adult who desires to be a part of what we do. Valuing diversity, Episcopal Campus Ministry welcomes any individual of any background and orientation! Like us on Facebook!" <https://www.facebook.com/ECMKirksville/>

## Oasis



Several years ago, we engaged in a months-long process to decide whether we wished to become an Oasis congregation. (See <http://theoasismissouri.weebly.com/what-are-oasis-congregations.html>) Once we set our feet on that path, we have not looked back. Oasis congregations have undergone a time of study, prayer and discernment about what it means to offer intentional welcome to LGBTQ people and their families and friends, and have signed the Oasis Affirmation of Welcome. Trinity is one of only seven congregations in Missouri to sign the Oasis Affirmation and the only openly-declared LGBTQ affirming church in northeastern Missouri.

### *The Oasis Affirmation of Welcome*

*We believe that all people are worthy of respect and honor, because all are created in the image of God, and all can respond to the love of God. In our baptismal vows we commit ourselves, with God's help, to seek and serve Christ in all persons, by loving our neighbors as ourselves, respecting the dignity of every human being, and striving for justice and peace among all people.*

*Yet we see that, in our churches and in society, gay, lesbian, bisexual and transgendered people are not always counted among those for whom the Church seeks justice, or grants due respect, as loving and beloved members of the household of God. We recognize that fear of, and discrimination against, gay, lesbian, bisexual and transgendered people is part of an oppressive history within the Church and society, which distorts our relationship with God and with other people, and diminishes the humanity of us all.*

*Therefore, we feel compelled to make explicit our welcome of gay, lesbian, bisexual and transgendered people into the ministries and life of this congregation, incarnating the message, "The Episcopal Church Welcomes You." We encourage gay, lesbian, bisexual and transgendered people to participate in all aspects of the ministries of this church, by bearing witness to Christ, and fully participating in our life, worship and governance.*

*Where we see division, we will seek, with God's help to be a people of reconciliation, offering a love that casts out all fear. Where we see injustice and ignorance, we will offer our ministry of advocacy and education, trusting the Holy Spirit to lead us all into truth.*

We have hosted events in our community to raise awareness of LGBTQ issues and to provide a space and a community for considering those issues in action, most recently offering a memorial service for those who were killed in an Orlando nightclub and their killer. A few years ago, we were the only church who testified at the Kirksville City Council in favor of an anti-discrimination ordinance for local housing. We seek out opportunities to learn more about how we might better create a just and respectful world. For example, we attend an annual welcome event at Truman State University for LGBTQ students and their supporters and we seek out opportunities for dialogue with members of the LGBTQ community in Adair County. Trinity is also affiliated with Integrity USA, where it is listed as a [Believe Out Loud / Welcoming Congregation](#).

### Outreach and Food Ministries



**Sorted and bagged food from the Fill the Ford event**

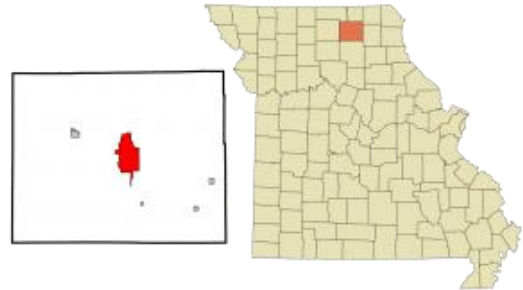
We share in the common work of material support for those in need. We provide warm winter hats, gloves, socks and scarves to the local Salvation Army. We have supported many causes through plate and other offerings – Victim Support Services, Habitat for Humanity, the Adair County Humane Society, Helping Hands Mission, and others. We participate in local collective efforts (for example, by working with other churches to sustain the Christian Community Food Depot) as well as diocesan efforts. For example, we recently provided a backpack for school children in the diocesan ECW drive and shoes and related products in the drive for our companion diocese in Lui, South Sudan. In the larger church, we have supported Nets for Life and the United Thank Offering (UTO). Some of us participated in adult formation work this past summer looking at how and what we give. We are interested in developing a more coherent approach to providing material support. Meanwhile, we are keenly aware that material support is only one part of the outreach picture; interaction is the other.

### Collaboration and Cooperation

Trinity was part of the Kirksville Interchurch Ministry (now defunct), and has recently joined with other churches in Pantry for Adair County (PAC). We have ongoing productive relationships with two of our neighboring churches, First Presbyterian Church and First Christian Church (Disciples of Christ), having joined with them to conduct Vacation Bible School in recent summers. We have enjoyed joint choir projects and youth formation projects with the Presbyterians, and recently combined forces for a joint Christmas worship service.

## Part Three – Vicar Search Resources

### Community Profile



#### *Population Trends*

Kirksville is a community of approximately 18,000 people. Some sources predict the population will decline by about 1% over the next 10 years; others are more optimistic. Over the past ten years, the number of family households has not grown as much as the population, suggesting that growth is taking place in non-family adult households. Kirksville is less diverse than the U.S. population with about 90% of Caucasian origin. Three percent of people in Kirksville are of Hispanic/Latino origin and 2.6% of African-American origin. The average age is 34 years (state average: about 39 years). Higher education institutions serve a steady 18-24 year-old population; at the same time, there seems to be a steady drop in the 25-34 year-old bracket, suggesting that Kirksville is a place where many young people transition to lives outside the area.



**Thousand Hills State Park and Forest Lake**

Demographic data tell us that there are about twice as many married-couple families with children as there are single-parent families in Kirksville; single-parent families are increasing, as is the trend in the state. Divorce is less prevalent in the Kirksville area than in Missouri as a whole. The number of school-age children is stable. The average household income has risen slightly over the past five years (to around \$50,000) and that raise is expected to continue, but both figures are less than the national average. On the other hand, the cost of living is approximately 15-18 percent below the U.S. average and nine percent less than the Missouri average. The difference is primarily shown in the cost of housing. About 18% of families have incomes that exceed \$100,000 per year; at the same time, individuals living at poverty level exceed 30%.

Education and recreation are strong community priorities. [The Kirksville R-3 School District](#) serves many of the area's youth and has a strong assessment program. The area offers several recreation opportunities for the outdoor enthusiast, such as swimming and boating at Thousand Hills State Park, hiking and biking, hunting and fishing. The city manages indoor and outdoor swimming pools at the Aquatic Center. The local YMCA recently spearheaded the drive for an [inclusive playground](#), completed in 2016. PACK (Physically Active Citizens of Kirksville) annually organizes several runs and walks. Interested citizens continue to work toward completion of a [walking/biking trail](#) that will run from city center to Thousand Hills State Park.



**Trinity- Organized Candlelight Vigil and March, on the Truman Campus, Addressing Racism**

***Social Issues*** - Diversity issues are paramount in the Kirksville area, including race/ethnicity, sexual orientation, substance abuse, and financial/food insecurity. Concern for racial/ethnic discrimination involves international students seeking education in Kirksville institutions of higher learning as well as recent immigrants and long-standing citizens of the area. Many people do welcome [diverse backgrounds and points of view](#). People from Trinity Episcopal Church have been active in the diocesan program, Dismantling Racism, as well as engaging in adult formation topics relating to class, gender, and other types of marginalization. Sexual orientation has been a hot topic in recent years. Trinity Episcopal Church has taken a [firm public stand](#) on housing equality issues in Kirksville. Alcohol and other substance abuse is an area of ongoing concern at the area's institutions of higher education, the K-12 school district, and within the community at large. Behavioral health is addressed across the community; for example, through the Heartland Task Force (asset-building and drug use prevention, K-12), Mark Twain Behavioral Health (professional counseling, community wide) Preferred Family Healthcare (professional intervention, community wide), and Missouri Partners in Prevention (consortium of public higher education institutions and state agencies). Trinity has sponsored weekly recovery services in the recent past and is open to new roles to support behavioral health.



**Trinity Participates in the Work of the Pantry for Adair County**

Finally, food insecurity is addressed in the area through several non-profits, including but not limited to the Christian Community Food Depot (CCFD), the Food Bank for Central and Northeast Missouri (FB), Helping Hands Mission (HHM), Pantry for Adair County (PAC), the Salvation Army Food Pantry (SA), and Take Root Café (TRC). Trinity collects food items weekly and has sponsored annual food drives at HyVee, a local grocery store for CCFD. Plate donations have been taken for Helping Hands Mission; other outreach funds have been given to Take Root Café. Trinity is an active member of PAC, an organization focused on gaining a facility with a walk-in freezer. The fact remains that food-insecure people in Adair County received 500,000 pounds of food last year – of an estimated need for two million pounds. Recently a couple wed at Trinity suggested that wedding guests donate to their choice of these organizations rather than spending money on wedding gifts, resulting in about \$2,500 for these agencies.

**Higher Education** - Three institutions of higher learning serve the Kirksville area: A.T. Still University of the Health Sciences, including the Missouri School of Dentistry and Oral Health; Moberly Area Community College; and Truman State University.



**The Normal Street Entrance to Truman State University**

ATSU, founded in 1892 as the original institution of osteopathic healthcare, annually serves about 3,000 students on two campuses (Kirksville and Mesa, Arizona). The community banded together to support building the [Missouri School of Dentistry and Oral Health at ATSU](#) in 2013 in Kirksville, highlighting [community concern about rural dental health](#) [Moberly Area Community College](#) annually serves about 5,000 students through its main campus in Moberly and five satellite campuses, one of which is Kirksville. Work completed at MACC is generally accepted by Missouri four-year public higher education institutions. Truman State University, founded in 1867, is the only highly selective public liberal arts university in the state and annually serves about 6,000 students. It is consistently rated [nationally as a best value school](#). Recently, funding has been approved for the [Inter-Professional Autism Clinic](#) as a result of a cross-institutional effort to expand resources for families in northeast Missouri.

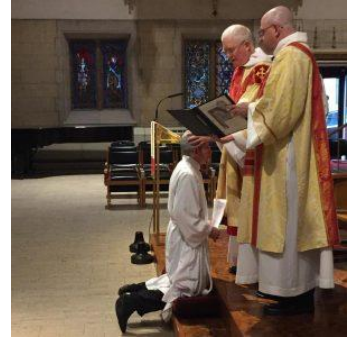
**Employment and Economic Development** - Several major retailers have chosen Kirksville to develop their markets, including Walmart, Home Depot, Ruby Tuesday, and Colton's Steakhouse. Construction is underway for several others, including: Menard's, Hobby Lobby, Hampton Inn, Holiday Inn Express, and other retail outlets. [Kraft Foods](#) has chosen to expand its meat processing plant here with a larger building and workforce. [Major employers](#) include Kraft, A.T. Still University of the Health Sciences, Truman State University, and Hollister, among others.



**Religious Environment** - The church community in the Kirksville area is composed of unaffiliated, nondenominational churches (as high as 57%); evangelical denominations (24%), mainline protestant churches (10%); Catholic churches (5%), and others (3%). Truman State University is home to several campus-affiliated student outreach programs, some of which are affiliated with mainline and other churches in the area and some of which are non-denominational (e.g., Campus Crusade for Christ). Religious program/ministry preferences, as reported from the Quadrennium Project, indicate that people in our area exceed national averages indicating the following as “most important” to them: ministries that encourage personal growth (such as addiction recovery and support programs, health and weight loss programs, etc.) and that support families (such as family counseling, crisis counseling, and parental development programs). In religious practices, people in our area exceed national averages in their preference for contemporary religious services and show strong interest in alternative spiritual practices, such as yoga and meditation. About half of those polled (mirrored nationally) say that Bible study groups, Christian education for youth, spiritual discussion groups, and traditional worship services are important to them.

For more demographic information from ExecutiveInsite Reports, go to:  
<http://pr.dfms.org/study/StaticPDFs/9/9313-2637.pdf>.

## Highlights of 2016



**The Ordination of Maria Evans to the Transitional Diaconate.**

### *We strengthened the sense of community within Trinity by:*

- hosting and participating in monthly home eucharists, April through December
- implementing a transportation ministry so that homebound and adult care center members could come to church regularly,
- celebrating milestones with church members, births, weddings, graduations, and the ordination of one of our own, Dr. Maria Evans, to the diaconate.

### *We built stronger connections with the communities we serve by:*

- helping our peer minister reexamine and rebuild our campus ministry,
- providing a place and a service for people to express their sorrow and compassion after the nightclub shooting in Orlando,
- collecting food for the hungry at our Fill the Ford event (1,047 pounds of food) and giving weekly to the Christian Community Food Depot (240 pounds for the year) with a combined value of over \$2,000,
- working with other churches to implement a successful Food 4 Kids program in the summer, continuing as a founding member of Pantry for Adair County (PAC), volunteering for monthly mobile food pantry service, joining in a new interchurch ministry group “Who is my Neighbor?” and working with First Presbyterian Church to offer a combined Christmas service (including a combined choir) followed by a Christmas dinner open to all;
- improving our website and looking at new ways to welcome people into our midst.

### *Last but not least, we grew our own spirits by:*

- welcoming and learning from two clergy visitors, the Rev. Canon Anderson Madimilo from Tanzania, a missionary who is studying in St. Louis, and the Venerable Mark Sluss, Archdeacon and Convenor of Deacons for our diocese,
- exploring a variety of topics in adult formation classes, from Hazardous Saints to Liturgical Music,
- showing up and working hard together to fundraise and to maintain our lovely church.

## Mission, Vision, and Goals

***Mission (as approved by the congregation)*** - We are an inclusive community of faith, strengthened by joyful hearts and engaged minds.

***Vision (as summarized from 2016 listening session and survey)*** - We want to continue to grow as open-minded, accepting, welcoming people who are committed to being a progressive voice and to responding to social justice issues in our area. We affirm the value of all human beings, including marginalized persons and persons of all faiths and cultures. We intend to grow in our faith by encouraging spiritual curiosity, focusing on doing worship with spiritual intensity and depth, and better equipping ourselves to care for people. We wish to continue to grow in numbers as well, and particularly want to see a renewed and enhanced campus young adult ministry with an active college campus presence. We would like an active children's and teen ministry. Our use of technology is expanding; we are eager to more competently portray our faith, our church, and our commitments in an online environment.

### ***Long-Term Goals -***

- 1: To faithfully explore our role as a mission church
- 2: To build our skills in caring for people, particularly people in transition
- 3: To live out our Oasis calling, to stand with and love the LGBTQ people in our community
- 4: To encourage each other to use our time, talents and treasure for the work of the Spirit
- 5: To revitalize our college student/young adult ministry
- 6: To support/work toward greater food security in NE Missouri
- 7: To deepen our understanding and to intensify our work regarding accessibility
- 8: To frame a more active children's / youth program



## Financial Impact of Accessibility Project, Financials, and Parish ASA

***Accessibility Project Impact on Financials*** - Trinity is the only Episcopal church in northeast Missouri. Within the city of Kirksville there are three college campuses. Trinity is also a mission church of the Diocese of Missouri. Because of these three factors, the Diocese of Missouri supports us financially.



**Accessible Entrance with Lift (Right)**

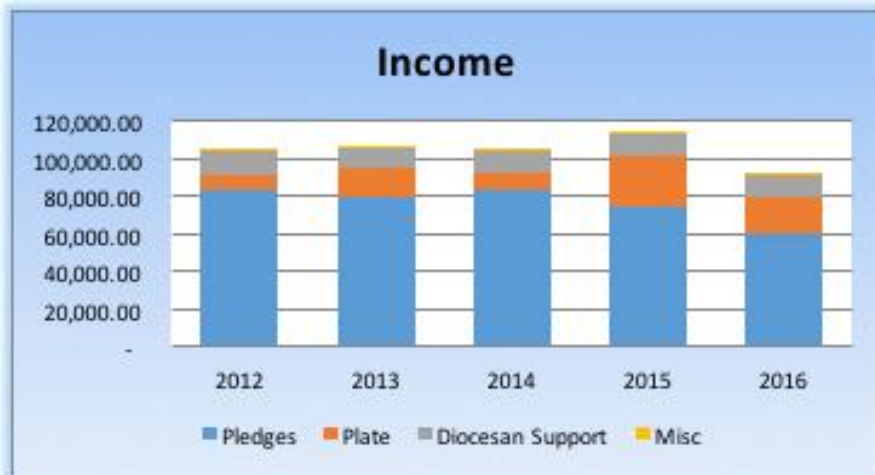
In 2013 we undertook a capital campaign for the construction of an accessibility entrance to our 100-year-old building. This resulted in a \$381,385 building project. Through pledges, fundraisers, grants and gifts the parish raised over half of the funds needed. To pay for the remaining project costs a ten-year loan of \$133,200 was secured through the Diocese of Missouri. Efforts to raise funds to pay back the loan have involved much of the congregation, and have involved a number of creative approaches, including a social media campaign, [a video appeal](#), special concerts, and dinners.

Our number of pledging members has been around 30 for the last five years. Our average Sunday attendance has been around 38 people during this same time frame. The major expenditures for Trinity each year include clergy expenses, the music program which includes a paid music director, and costs to maintain our two buildings: the church and the vicarage. The outreach line item includes our Diocesan assessment and pass through from the Diocese for our college peer minister and from plate collection for specific outreach efforts.

The financial future for Trinity is unfolding. We have a small amount of money in savings and investments to meet unforeseen or emergency needs. However, due to the continued loan payments and the decrease in the total pledged amount for 2017, in the future we will need to provide opportunities for the congregation and the diocese to explore ways to meet our future financial obligations. Our end of year income and expenses for the last five years are presented below. Our account balances as of the end of 2016 total \$122,355.75. Our outstanding loan balance is \$111,586.38.

### Financials

- [2016 Financial Reports](#)
- [2016 Year End Financial Considerations for Trinity](#)
- [2017 Final Budget](#)



Average Sunday Attendance and Pledges, 2012-2016

	2012	2013	2014	2015	2016
ASA	41	42	38	35	33
Pledge Units	32	30	32	28	25
Pledge Amount	83,429	75,565	88,312	82,654	74,507